

HIGH-LIFT TRACK

- BREAKAWAY(HI-LIFT AVAILABLE IN 3" INCREMENTS)
- STRAIGHT INCLINE (OPTIONAL) *

* STRAIGHT INCLINE TRACK LIMITATIONS:

DOOR HEIGHT	MAX. HI-LIFT
THRU 14'0"	54"
@ 15'0"	43"
@ 16'0"	31"

HEADROOM REQUIREMENTS:

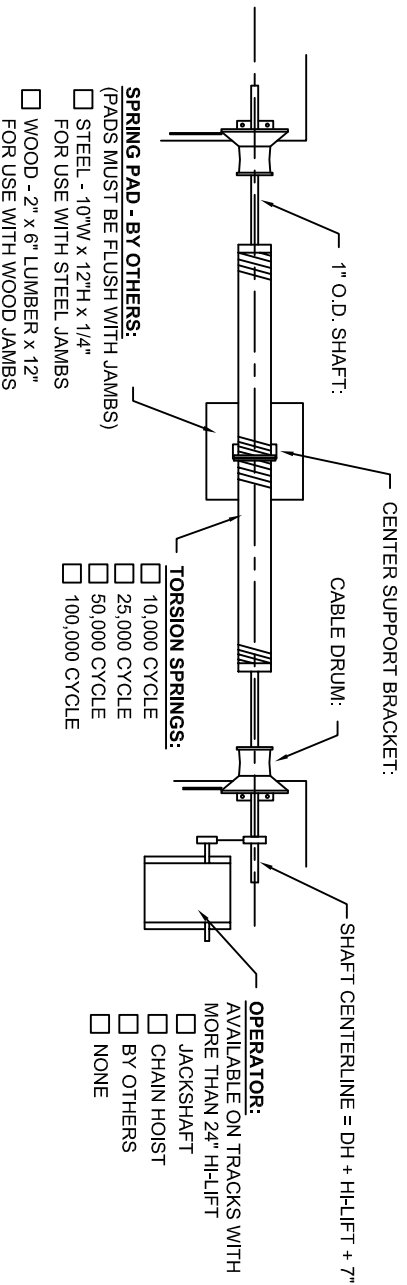
- MIN. HEADROOM = HI-LIFT + 12"
- 4" ADDITIONAL HEADROOM REQUIRED FOR TROLLEY OPERATOR
- 12" ADDITIONAL HEADROOM REQUIRED FOR DOUBLE SHAFT

MAX. AVAILABLE HI-LIFT:

- (BREAKAWAY TRACK)
- MAXIMUM HI-LIFT = FLOOR TO CEILING - (DOOR HEIGHT + 12")
- HI-LIFT MAY NOT EXCEED DOOR HEIGHT - 24" OR EXCEED 162" (13'6")

NOTE:

SPRING SIZE AND CONFIGURATION INDIVIDUALLY CALCULATED TO COUNTERBALANCE DOOR LOAD. AN EXACT SPRING LAYOUT CAN BE FURNISHED UPON APPROVAL OF BID. SOME DOORS MAY REQUIRE 6" SPRINGS OR DOUBLE SHAFTS.



- TORSION SPRINGS:**
- 10,000 CYCLE
 - 25,000 CYCLE
 - 50,000 CYCLE
 - 100,000 CYCLE

- SPRING PAD - BY OTHERS:**
(PADS MUST BE FLUSH WITH JAMBS)
- STEEL - 10"W x 12"H x 1/4"
 - FOR USE WITH STEEL JAMBS
 - WOOD - 2" x 6" LUMBER x 12"
 - FOR USE WITH WOOD JAMBS

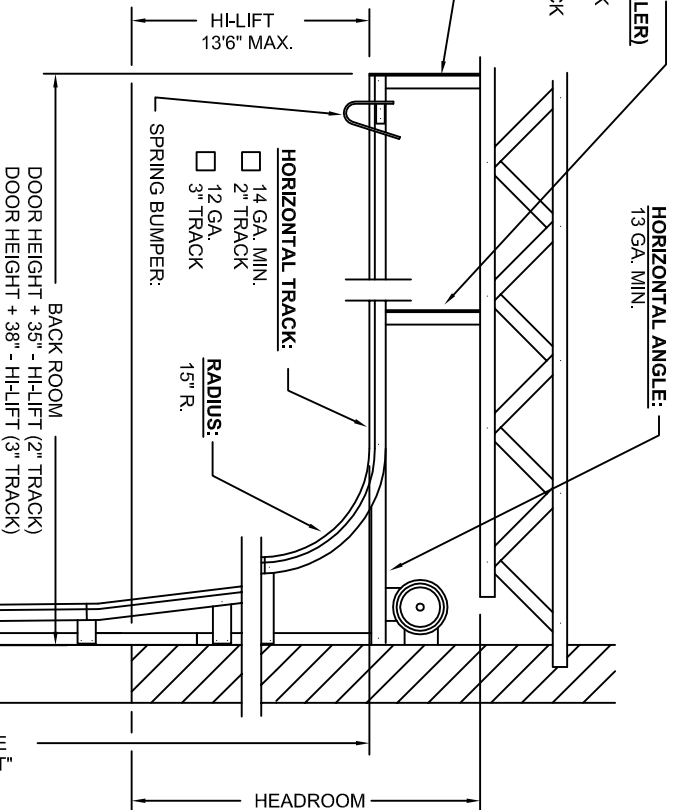
- OPERATOR:**
- AVAILABLE ON TRACKS WITH MORE THAN 24" HI-LIFT
 - JACKSHAFT
 - CHAIN HOIST
 - BY OTHERS
 - NONE

- VERTICAL TRACK:**
- 16 GA. MIN. 2" TRACK
 - 12 GA. 3" TRACK

INTERMEDIATE HORIZONTAL TRACK SUPPORT: (BY INSTALLER)

- NO - (HORIZONTAL TRACK LENGTH UP TO 13'0")
- YES - (HORIZONTAL TRACK LENGTH OVER 13'0")

REAR HANGER: (SUPPLIED BY INSTALLER)



- HORIZONTAL TRACK:**
- 14 GA. MIN. 2" TRACK
 - 12 GA. 3" TRACK
- RADIUS:** 15" R.
- SPRING BUMPER:**
- BACK ROOM**
- DOOR HEIGHT + 35" - HI-LIFT (2" TRACK)
 - DOOR HEIGHT + 38" - HI-LIFT (3" TRACK)

HIGH LIFT TRACK SIZE:

OPENING SIZE: _____ " W x _____ " H

DOOR SIZE: _____ " W x _____ " H

OPERATOR MODEL #: _____

OPERATOR BACKROOM: _____

BACK ROOM: _____

OVERHEAD CLEARANCE: _____

AVAILABLE HEADROOM: _____

HEADROOM REQUIREMENT: _____

SHEET 'T-5'

DATE: _____

BID #: _____

PAGE _____ of _____